

ARC Criteria:

Phantom type	CF (MHZ)	Sagittal localizer (mm)	Axial x (mm)	Axial y (mm)	UL (mm)	LR (mm)	# LCD Spokes
Large	$\pm 2ppm$	148 ± 2	190 ± 2	190 ± 2	≤ 1.0	≤ 1.0	≥ 9
Small	$\pm 2ppm$	100 ± 2	100 ± 2	100 ± 2	≤ 0.8	≤ 0.8	≥ 9

Table 1: ARC Criteria and Action Limits.

QC Performance:

Phantom type	CF (MHZ)	Sagittal localizer (mm)	Axial x (mm)	Axial y (mm)	UL (mm)	LR (mm)	# LCD Spokes	Artifacts	Pass/Fail
Large	123.2	147.461	190.430	190.432	1.1	1.1	10	Small bending & Small Dark Spots	Fail
Small	63.8	99.390	99.864	99.396	0.7	0.7	10	Slices merged & Bubbles	Pass

Table 2: QC results, Big Phantom Pictures are Not Clear Enough to Make a Decision on UL LR.

Examples:

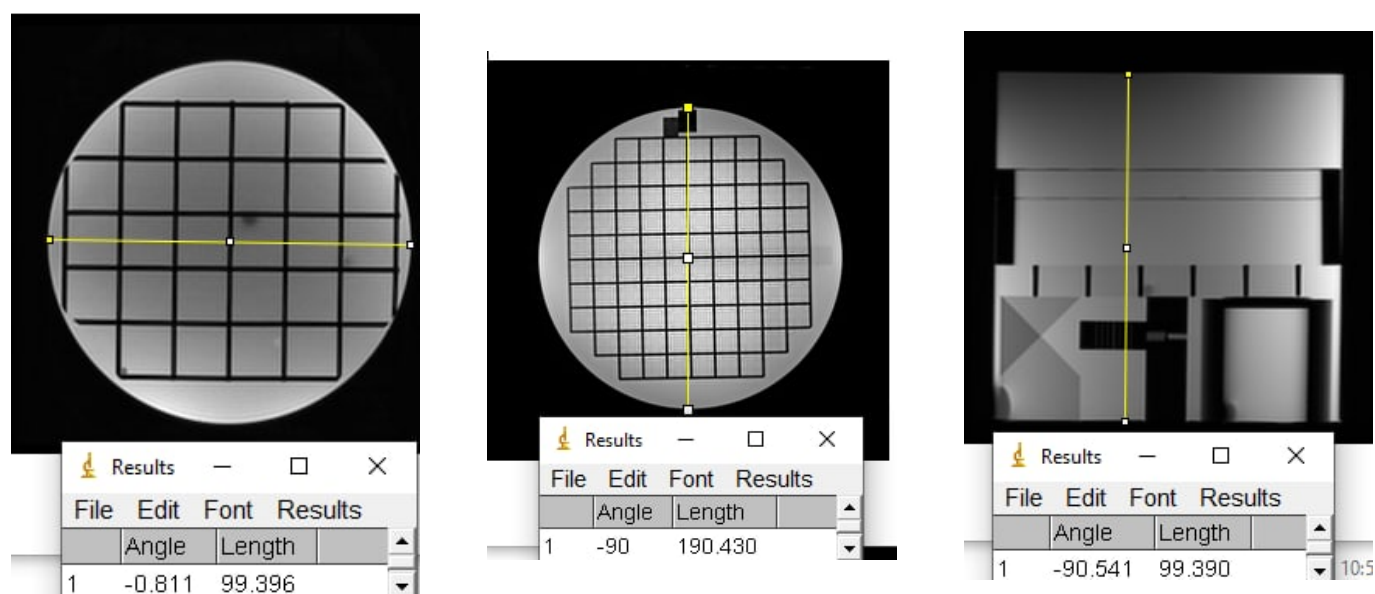


Figure 1: Examples of taking the data